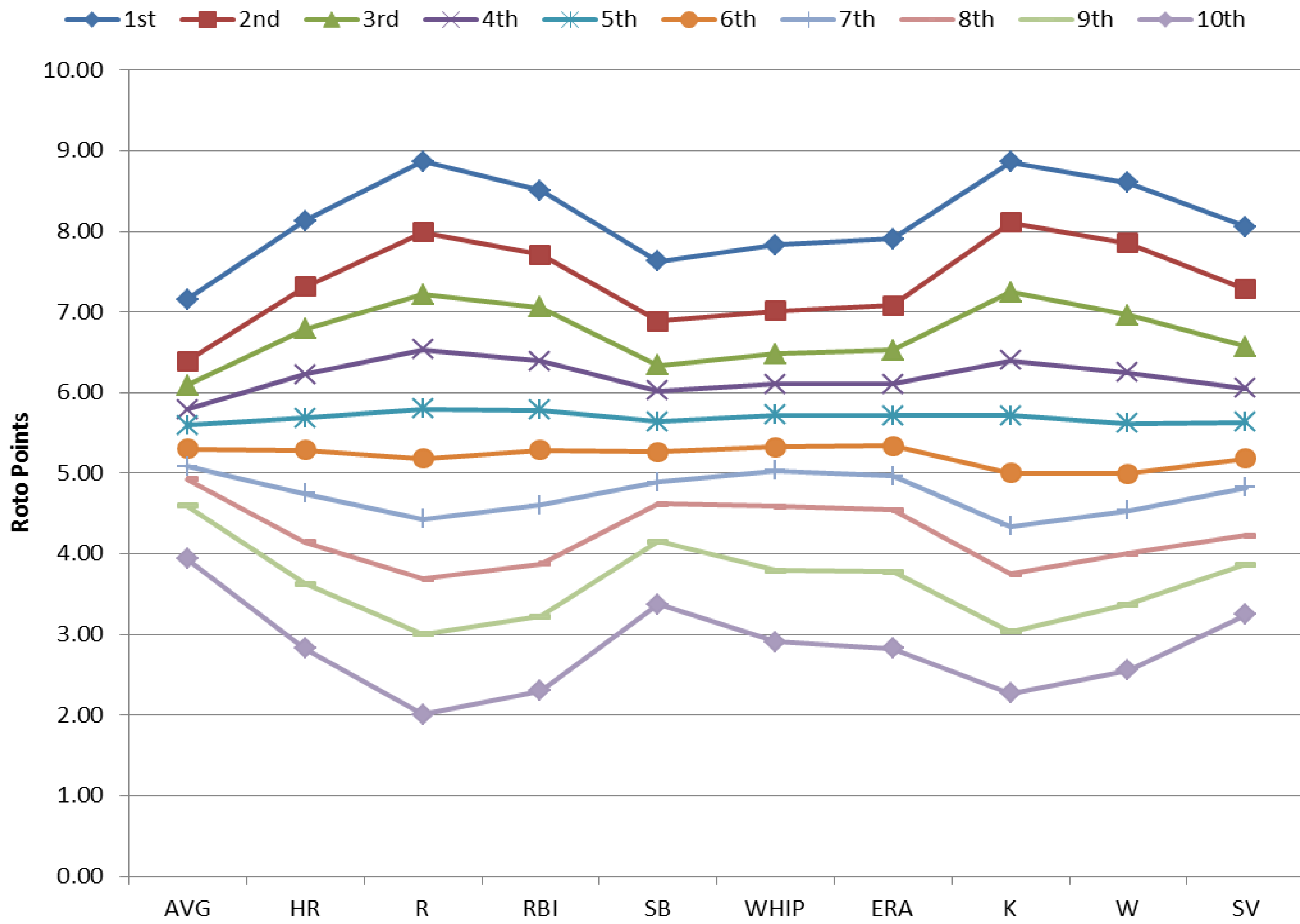




Avg Roto Points Per Stat By Finish (2009-2011)



AVERAGE STATS REQUIRED PER ROTISSERIE POINT, 2009-2011

Batting Average				Home Runs				Runs				RBIS				Stolen Bases			
Points	Min Value	Max Value	Avg Value	Points	Min Value	Max Value	Avg Value	Points	Min Value	Max Value	Avg Value	Points	Min Value	Max Value	Avg Value	Points	Min Value	Max Value	Avg Value
10	.2765	.3026	.2856	10	271	375	309.9	10	1060	1286	1161.6	10	1032	1266	1130.7	10	175	308	221.4
9	.2739	.2915	.2813	9	262	339	292.3	9	1043	1221	1123.7	9	1005	1215	1091.4	9	166	255	200.2
8	.2723	.2875	.2784	8	251	318	280.5	8	1000	1180	1098.9	8	966	1154	1064.2	8	151	233	187.2
7	.2702	.2829	.2762	7	240	305	271.1	7	973	1159	1077.0	7	947	1121	1041.1	7	141	214	176.2
6	.2681	.2811	.2743	6	233	290	262.2	6	952	1134	1056.5	6	921	1106	1019.6	6	132	199	166.2
5	.2655	.2786	.2724	5	221	283	253.3	5	926	1111	1035.4	5	887	1081	997.3	5	120	188	156.2
4	.2626	.2770	.2704	4	206	278	243.9	4	841	1097	1012.3	4	832	1060	972.8	4	102	177	146.3
3	.2604	.2757	.2682	3	182	265	233.2	3	833	1085	984.4	3	807	1046	944.4	3	89	168	135.2
2	.2543	.2726	.2655	2	136	260	220.1	2	617	1067	948.5	2	629	1028	907.4	2	66	160	121.4
1	.2427	.2709	.2613	1	80	247	199.0	1	317	1044	885.0	1	329	994	842.6	1	28	150	101.4

Wins				Strikeouts				Saves				WHIP				ERA			
Points	Min Value	Max Value	Avg Value	Points	Min Value	Max Value	Avg Value	Points	Min Value	Max Value	Avg Value	Points	Min Value	Max Value	Avg Value	Points	Min Value	Max Value	Avg Value
10	92	133	108.0	10	1242	1702	1462.0	10	122	276	171.9	10	1.074	1.240	1.178	10	2.689	3.567	3.218
9	89	120	102.0	9	1207	1577	1391.8	9	110	224	149.3	9	1.138	1.253	1.205	9	3.006	3.647	3.367
8	85	113	97.8	8	1155	1525	1343.3	8	100	198	133.6	8	1.170	1.267	1.222	8	3.157	3.730	3.463
7	79	107	94.2	7	1121	1462	1299.2	7	87	158	120.9	7	1.191	1.278	1.237	7	3.276	3.799	3.546
6	76	105	91.2	6	1068	1439	1259.3	6	73	148	109.1	6	1.203	1.298	1.250	6	3.360	3.877	3.622
5	71	101	88.1	5	1012	1415	1219.5	5	56	134	97.6	5	1.215	1.322	1.262	5	3.452	4.025	3.697
4	68	99	84.8	4	980	1382	1177.3	4	33	122	84.8	4	1.230	1.345	1.276	4	3.540	4.134	3.777
3	60	96	81.0	3	849	1346	1131.3	3	7	112	70.6	3	1.246	1.392	1.292	3	3.586	4.558	3.868
2	28	93	76.0	2	389	1291	1072.5	2	1	98	52.9	2	1.234	1.416	1.311	2	3.577	4.686	3.984
1	9	92	66.6	1	185	1252	964.1	1	1	86	31.9	1	1.116	1.492	1.332	1	2.937	5.096	4.106

How to interpret this information:

The line chart shows the average fantasy points each team earned per category, based on their finishing position. For example, a first-place team (the top line) earn 7 roto points in batting average and 9 roto points in runs.

The value charts demonstrate the average statistical benchmarks to earn a point. For example, 270 home runs would be just short of 7 fantasy points on average, with a range of finish between 3 and 9 points.