

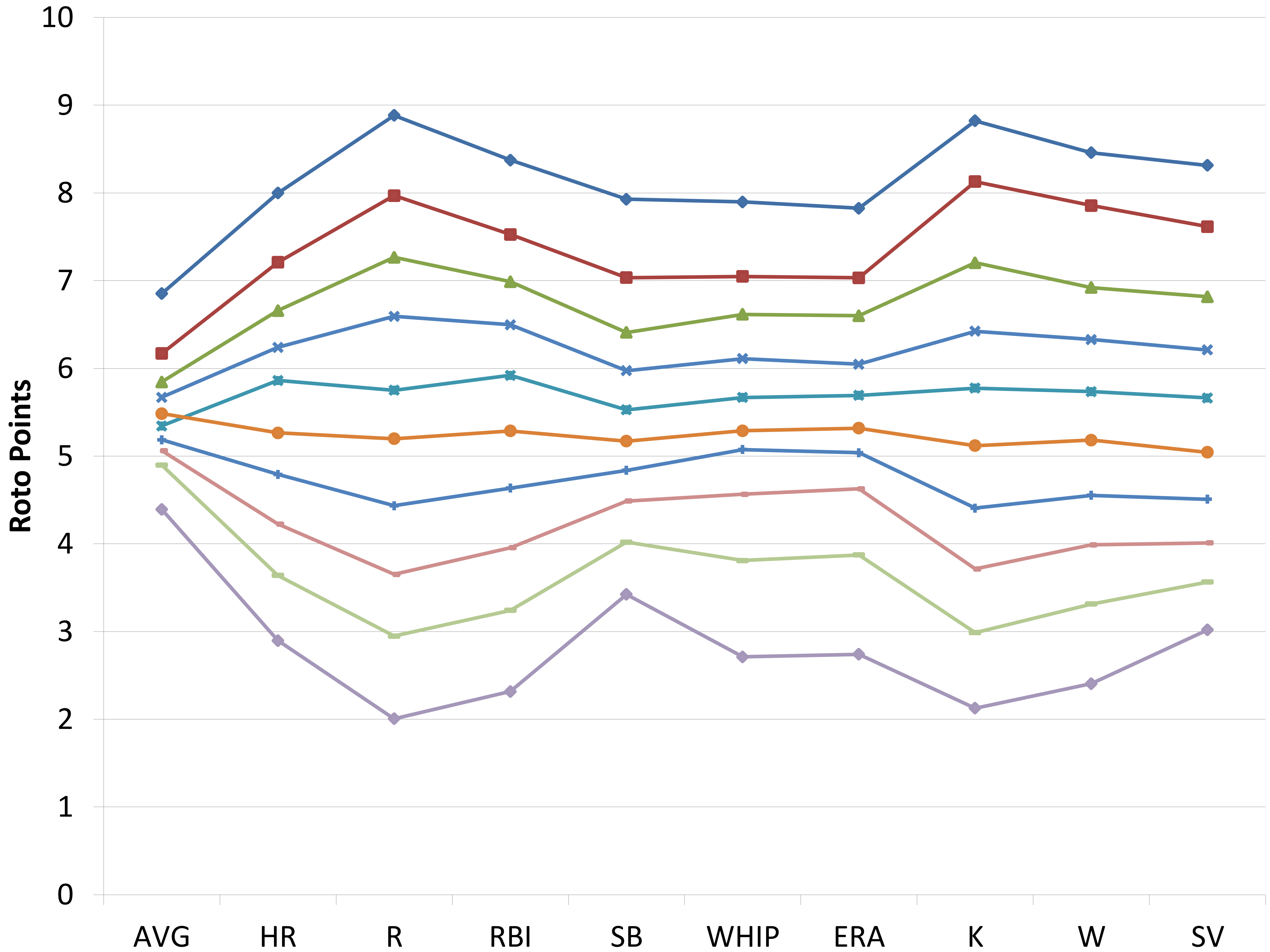


ESPN Standard League Roto Points Matrix



Avg Roto Points By Stat (2011-13)

◆ First Place ■ 2nd ▲ 3rd ✕ 4th ⬢ 5th ● 6th + 7th - 8th ▽ 9th ◆ Last



AVERAGE STATS REQUIRED PER ROTISSERIE POINT IN ESPN STANDARD 10-TEAM LEAGUES, 2011-2013

Batting Average				Home Runs				Runs				RBIS				Stolen Bases			
Points	Min Value	Max Value	Avg Value	Points	Min Value	Max Value	Avg Value	Points	Min Value	Max Value	Avg Value	Points	Min Value	Max Value	Avg Value	Points	Min Value	Max Value	Avg Value
10	.2737	.3017	.2831	10	265	369	303.9	10	1030	1272	1130.0	10	985	1252	1094.3	10	166	297	215.1
9	.2715	.2892	.2788	9	252	337	286.3	9	1003	1194	1090.7	9	960	1179	1054.7	9	156	245	195.0
8	.2697	.2852	.2760	8	241	316	274.6	8	980	1153	1064.6	8	937	1119	1027.3	8	146	224	182.0
7	.2675	.2813	.2737	7	231	301	265.3	7	944	1124	1041.5	7	911	1094	1004.1	7	140	209	171.2
6	.2649	.2791	.2717	6	222	286	256.3	6	912	1104	1020.1	6	877	1067	982.3	6	131	192	161.5
5	.2618	.2770	.2698	5	214	279	247.4	5	886	1084	997.9	5	853	1048	959.2	5	116	184	151.9
4	.2596	.2750	.2677	4	195	272	238.4	4	828	1066	973.2	4	818	1028	934.6	4	102	174	142.1
3	.2560	.2720	.2654	3	177	260	227.9	3	767	1053	944.5	3	747	1014	906.2	3	83	168	131.2
2	.2485	.2706	.2626	2	157	255	215.0	2	722	1032	908.6	2	674	993	868.9	2	65	157	118.0
1	.2371	.2679	.2581	1	66	245	194.3	1	272	1019	846.9	1	245	962	804.5	1	30	148	98.6

Wins				Strikeouts				Saves				WHIP				ERA			
Points	Min Value	Max Value	Avg Value	Points	Min Value	Max Value	Avg Value	Points	Min Value	Max Value	Avg Value	Points	Min Value	Max Value	Avg Value	Points	Min Value	Max Value	Avg Value
10	91	131	106.6	10	1273	1784	1496.1	10	123	292	179.9	10	1.048	1.207	1.143	10	2.620	3.486	3.158
9	86	117	100.5	9	1231	1642	1423.9	9	111	230	156.9	9	1.095	1.222	1.171	9	2.906	3.578	3.300
8	83	112	96.4	8	1187	1580	1373.8	8	100	194	140.3	8	1.127	1.242	1.188	8	3.074	3.660	3.393
7	78	107	92.9	7	1141	1534	1329.2	7	86	169	126.2	7	1.158	1.252	1.203	7	3.184	3.736	3.472
6	74	104	89.7	6	1092	1482	1287.9	6	71	157	113.0	6	1.174	1.274	1.217	6	3.303	3.991	3.570
5	69	100	86.6	5	1027	1458	1246.4	5	47	138	99.8	5	1.182	1.301	1.230	5	3.382	4.030	3.643
4	65	99	83.2	4	962	1428	1203.2	4	21	127	85.6	4	1.198	1.315	1.244	4	3.479	4.241	3.726
3	56	95	79.2	3	874	1395	1154.1	3	2	118	69.8	3	1.195	1.315	1.266	3	3.385	4.242	3.791
2	39	91	74.2	2	611	1334	1091.2	2	1	100	50.7	2	1.154	1.407	1.279	2	3.208	4.614	3.896
1	13	89	64.8	1	216	1314	972.1	1	1	88	29.8	1	0.994	1.450	1.287	1	2.489	4.956	3.945

How to interpret this information:

The line chart shows the average fantasy points each team earned per category, based on their finishing position. For example, a first-place team (the top line) earned more than 7 roto points in batting average and close to 9 roto points in runs.

The value charts demonstrate the average statistical benchmarks to earn a point. For example, 270 home runs would be just short of 8 fantasy points on average, with a range of finish between 3 and 9 points.